



Copyright © 2003 NINIVA AG

# Financial Document Classifier

Copyright © 2003 NINIVA AG

The copyright in all material provided on this document is held by NINIVA or by the original creator of the material. Except as stated herein, none of the material may be copied, reproduced, distributed, republished, downloaded, displayed, posted or transmitted in any form or by any means, including, but not limited to, electronic, mechanical, photocopying, recording, or otherwise, without the prior written permission of NINIVA or the copyright owner. Permission is granted to display, copy, distribute and download the materials on this Site for personal, non-commercial use only, provided you do not modify the materials and that you retain all copyright and other proprietary notices contained in the materials. You also may not, without NINIVA's permission, "mirror" any material contained on this Site on any other server. This permission terminates automatically if you breach any of these terms or conditions. Upon termination, you must immediately destroy any downloaded and printed materials. Any unauthorized use of any material contained on this Site may violate copyright laws, trademark laws, the laws of privacy and publicity, and communications regulations and statutes.

Micros-Fidelio Back Office is a trademark of MICROS Systems, Inc.

Microsoft Excel is a registered trademark of the Microsoft Corporation.

Excel is a registered trademark of Excel Communications, Inc.

Microsoft(r) is a registered trademark of the Microsoft Corporation.

Microsoft Windows 98, NT, 2000, XP are registered trademarks of Microsoft Corporation.

Microsoft Office is registered trademark of Microsoft Corporation.

Netscape and Netscape Navigator are trademarks of Netscape Communications Corporation.

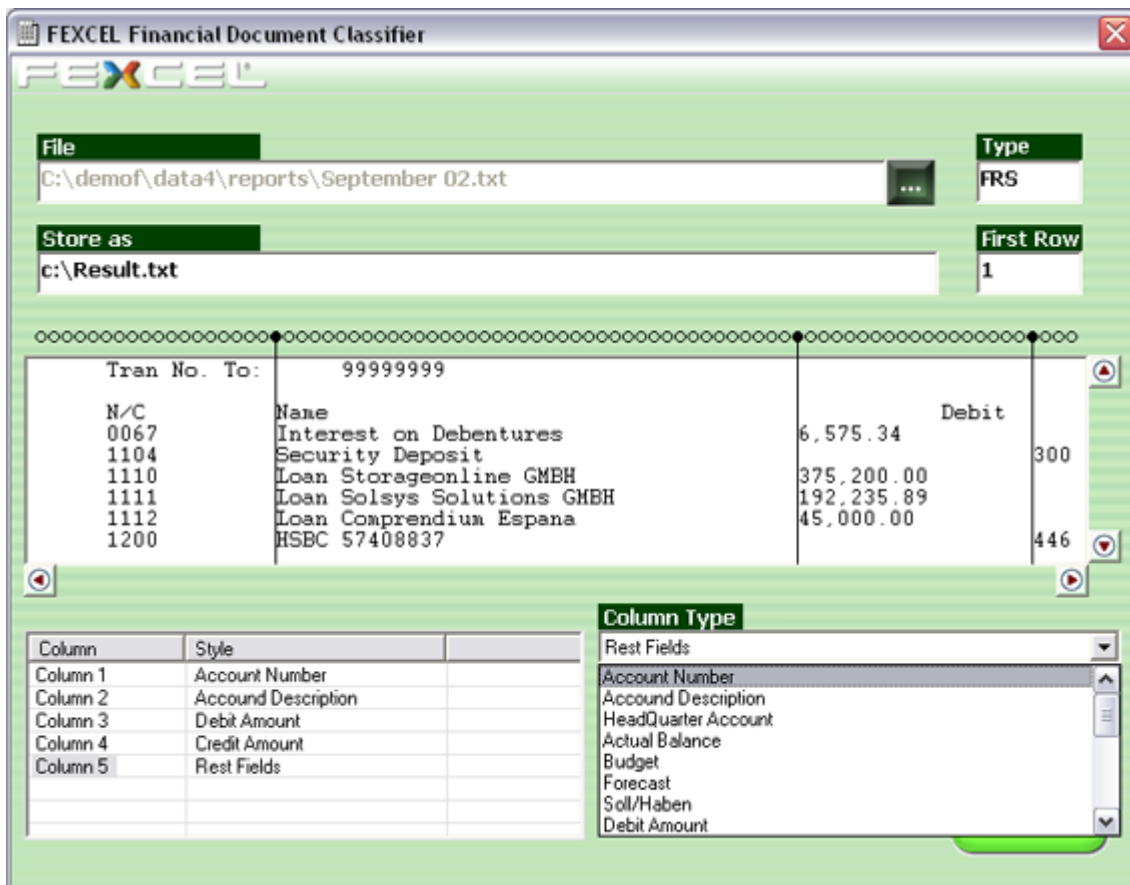
Last updated: June 21, 2002

© 2001 NINIVA AG. All rights reserved.

# 1 Financial Document Classifier

Fexcel's Financial Document Classifier creates an XML document definition for each new document format. The XML could later used for issuing the same document with the same content but a different format or use a standard XML parser for loading the document content in a database such as Oracle, SAP, or export the document in XLS, HTML or PDF.

Supporting an infinite number of document formats the classifier is the first part of the ETL (Extract, Transform, Load) extracting this time directly from a document rather than from a data warehouse. The document classifier is an optional tool in the Fexcel HQ Suite used for visual tagging columns in a financial document. It also could be used as a standalone tool for reformatting documents.



### Concepts

For a pointed document which format needs to be defined, on the document preview the classifier will insert vertical lines by default where it believes the columns are separated. A mouse click on the circle on the beginning of the vertical line will insert a new line or remove an existing one. Repeating this for each column defines the column separation. What needs to be done is to assign the columns type i.e. Account Number, Debit Amount, Budget etc.

Typical usage would be reading the next document formats:

Chart of Accounts  
Period Summarized Trial Balance  
Period Detailed Trial Balance  
Year to Date Report  
12 accounting periods accounts actual balance  
12 accounting periods Budget Report  
12 accounting periods Forecast Report

### Reformatting content

Reformatting takes place on two levels: file format and fields format.

### The fields

#### File

The filename of the file waiting to be defined.

#### Type

The three letters entered here will create a new document type. In the above example the filename will be FRS.RDC ( The RDC extension is reserved in Fexcel for document definitions.

#### Store as

The filename given here will be created once the document definition process is finished. This copy could be used as template for manual modification with a text editor.

#### Column

Here the column types are assigned for each column number. The column types are listed below.

#### Column Types

<ACN> Account Number  
<ACD> Account Description  
<AHQ> HeadQuarter Account  
<ACT> Actual Balance  
<A01> Actual Period 01  
<A02> Actual Period 02  
<A03> Actual Period 03  
<A04> Actual Period 04  
<A05> Actual Period 05  
<A06> Actual Period 06  
<A07> Actual Period 07  
<A08> Actual Period 08  
<A09> Actual Period 09  
<A10> Actual Period 10  
<A11> Actual Period 11  
<A12> Actual Period 12  
<BUD> Budget  
<B01> Budget Period 01  
<B02> Budget Period 02  
<B03> Budget Period 03  
<B04> Budget Period 04  
<B05> Budget Period 05  
<B06> Budget Period 06  
<B07> Budget Period 07  
<B08> Budget Period 08  
<B09> Budget Period 09  
<B10> Budget Period 10  
<B11> Budget Period 11  
<B12> Budget Period 12  
<FOR> Forecast  
<F01> Forecast Period 01  
<F02> Forecast Period 02  
<F03> Forecast Period 03  
<F04> Forecast Period 04  
<F05> Forecast Period 05  
<F06> Forecast Period 06  
<F07> Forecast Period 07  
<F08> Forecast Period 08  
<F09> Forecast Period 09  
<F10> Forecast Period 10  
<F11> Forecast Period 11  
<F12> Forecast Period 12  
<SGN> Soll/Haben  
<DEB> Debit Amount  
<CRE> Credit Amount  
<YOB> Year Opening Balance  
<YTD> Year to Date Actual Balance  
<YTC> Year to Date Credit  
<CLA> Cluster Account Number  
<CLB> Cluster Begin  
<CLE> Cluster End  
<CLX> Cluster Exception Begin  
<CLY> Cluster Exception End  
<CLC> Cluster Containing Cluster

<CLD> Cluster Description  
<PER> Period Number  
<PEY> Account Year  
<UNK> Unknown  
<RST> Rest Fields

To get the actual one please try to download from [www.fexcel.de](http://www.fexcel.de)

Notes:

- Fexcel supports up to 20 accounting periods per year. This full list contains <A13>..<<A20>, <B13>..<<B20>, <F13>..<<F20>.
- The account number formats 1-234-567, 1.234.567, "1.234.567", 1/234/567 will be reformatted to 1234567 ( max 11 digits )
- For a delimited file as for example XLS file, only the columns order is important.